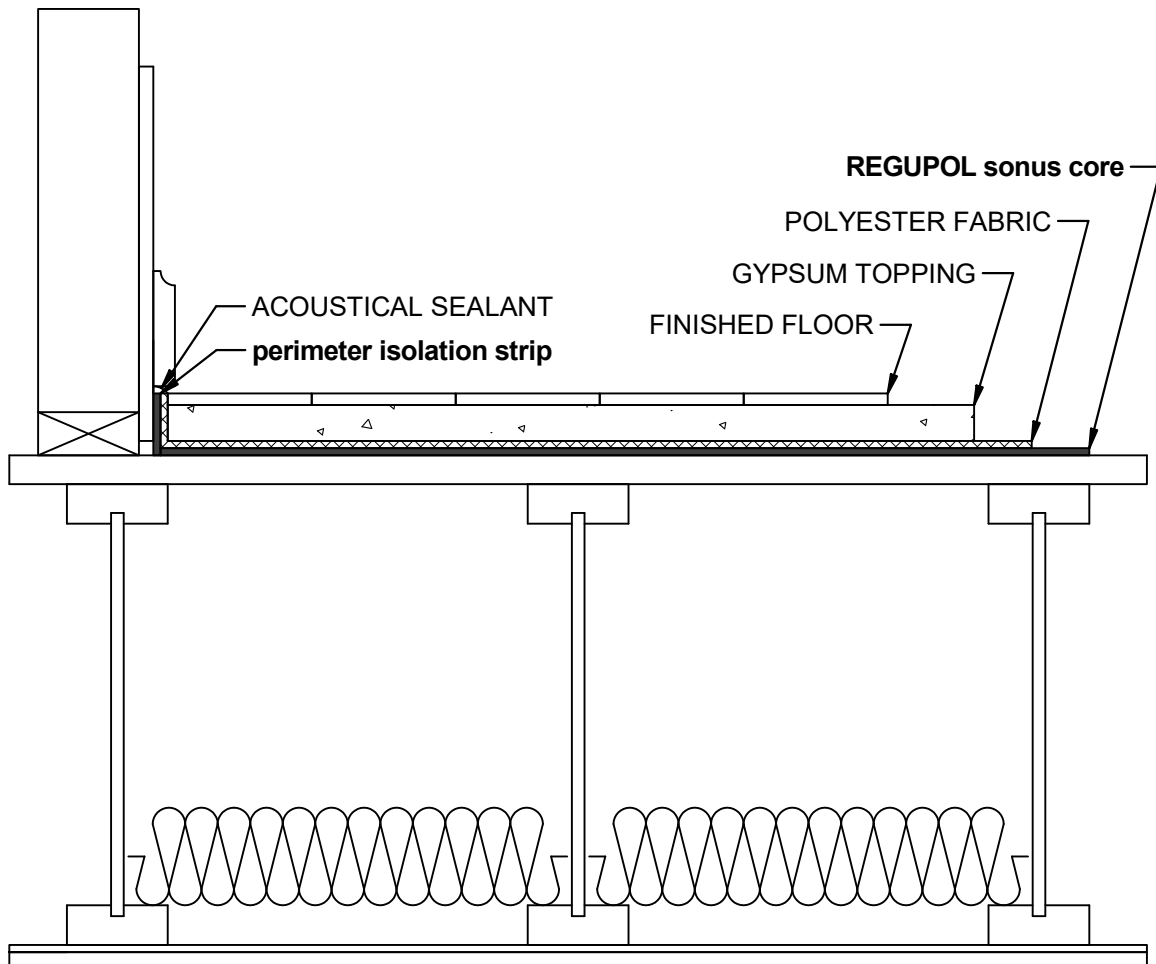


Installation Notes

First, install **REGUPOL perimeter isolation strips** around all walls and penetrations. Then loose lay the **REGUPOL sonus core** over the subfloor from wall to wall. Next, install non-woven polyester fabric (garden fabric or weed control) on top of the **sonus core** and up the walls. Overlap the fabric by 6" and tape the seems. Tape the fabric to the walls. Afterwards, pour the gypsum topping on top of the fabric. Install the finish floor and cut the **perimeter isolation strips** flush.

Minimum Gypsum Topping Thickness @ 2500 PSI:

sonus core 2mm, 3mm - 3/4"+
sonus core 5mm - 1"+
sonus core 6, 10, 12mm - 1-1/4"+



Contact

REGUPOL America LLC
 11 Ritter Way
 Lebanon, Pennsylvania 17042
 UNITED STATES OF AMERICA
 www.regupol.com

Notes

Adjacent trades are only shown schematically and in parts. The applicability and other conditions or constraints need to be checked by the customer or user on their own responsibility. The technical data sheets, installation instructions and local conditions need to be considered.

Project:

Project no.:

Detail: sonus core gypsum installation

Drawn by: DLG

Date: 12.2.2021

Scale: N/A

DWG no.: 1